

# Automatické myčky aut se sušením

Uzavřený obvod

až 5 chemických ošetření

odolný vůči  
kyselinám

Žádné problémy s ekologií

Vyměnitelné rozprašovací  
trysky

Filtrace bez vypouštění do  
kanalizace

## Description

**Automatic car wash** is a solution that allows you to reduce costs, improve quality and increase the efficiency of the surface preparation process.

**The automatic car wash is equipped with a set of spray pumps**, has been designed so that as little liquid as possible migrates after the process to subsequent processes, **thereby saving money and improving washing quality.**

**This is very important** because the apparent savings in systems made without the use of these solutions may generate much higher costs related to chemistry and waste disposal in the future, which will simply be more. Attention should also be paid to problems with maintaining the required parameters of the bath.

Research and development work allowed us to develop **A car wash with the function of drying details** (Option) hot air blown by a set of fans after the washing process.

ROMER - Producent wysokiej jakości lakierni proszkowych

**The car wash is equipped with an advanced system for creating your own macro programs** , which can consist of 10 steps each, depending on the number of tanks, the processes can be repeated, their order can be changed, etc.

**Each tank has its own unique icon and name** , allowing the operator to work intuitively.

**Optionally, the tanks can be equipped with bath filling systems** that can be executed, for example, between processes or at the end of a cycle.

- Control installed on swivel arm for better access
- PLC

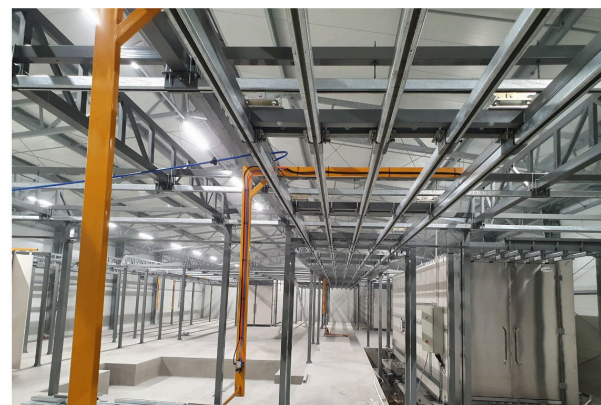
microprocessor control • 7"

- Very high number of nozzles compared to other solutions
  - (Option) Possibility of drying details after the washing process
  - The ability to create your own advanced programs
  - Advanced system of dampers made of acid-proof sheets, double protected with limit switches
  - Control system for tight closing and full opening of the flaps
  - In order to minimize the mixing of fluids, separate pipelines, nozzles, tanks for each treatment
  - Smart control - in the event of a power cut / sudden shutdown, liquids cannot be mixed
- touchscreen operator panel • Fully automatic operation

## Photos



## ROMER - Producent wysokiej jakości lakierni proszkowych



ROMER - Producent wysokiej jakości lakierni proszkowych

## Movie

ROMER